



## Introduction

Data Logging Stick GPRS is mainly used in Ginlong inverters to realize simple and quick access to Internet. Users can easily check device information by logging in the monitoring center ([www.ginlongmonitoring.com](http://www.ginlongmonitoring.com)). The communication topology is as shown below:



### Description of Symbols

#### NOTE

"Note" indicates additional information in the document and provides emphasis and supplements to the main contents. It also provides optimized product use skills or tips to save your time.

To ensure normal use of the device, before using the device, be sure that the communication address of the inverter is "01". The communication address of inverters can be set on the LCD of inverters.

## Data Logging Stick GPRS Quick User Manual

Ginlong-DLS-G Version: 1.2



SN:

### Delivery Content

- 1 × GPRS
- 1 × Data Logging Stick GPRS Quick User Manual

## 1 Electrical Connection

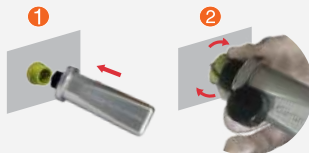
Connect GPRS to the corresponding interface on the inverter. 5K inverter will be used as an example in this manual. Please perform relevant operations as indicated below:



Groove  
Data Logging Stick GPRS Interface

### Data Logging Stick GPRS Installation

1. Insert GPRS Stick into RS485/GPRS interface.
2. Fasten the GPRS monitor.



#### NOTE

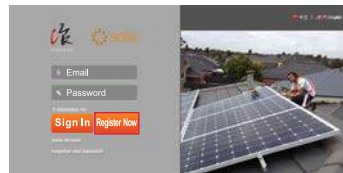
The device must be kept away from large metal objects and electrical devices with strong magnetic fields, such as microwave oven, refrigerator, cordless phone, concrete wall, PV panel and metal wall, to ensure the communication quality. Communication quality may be affected in lightning storms.

## 2 Register on Ginlongmonitoring

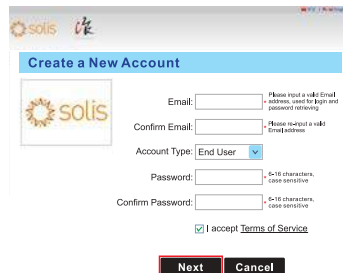
Open a web browser and visit the Ginlongmonitoring website:<http://www.ginlongmonitoring.com>

Supported browsers: Internet Explore 8+, Google Chrome 10+, Firefox 9+, Safari 4+

- ① Click [Register Now](#).



- ② Fill in your email address and password, then click [Next](#).




③ Fill in the information as required, then click **Complete**.

#### Create a New Account

Type Of Site **PV Power Plant**

Site Name  \*Maximum 20 Letters

Upload Image **Default.jpg**  Recommended image size: 300px×220px



Country **China**

Province/State **Zhejiang**

City **Ningbo**

Street  Locate Your Site On Map

ZIP Code

Timezone **(GMT+08:00)B**

Number Format **1234567.89**

Temperature Unit **°F**

System Size(kWp)

Feed-in Tariff(FIT)  **AUD**

Panel Type **3S**

Inverter Type **Ginlong**

Description

**Make This Site Public**

#### Registration

Datalogger S/N  \*

Installer

Specific type

Serial number of inverter

Number of installation

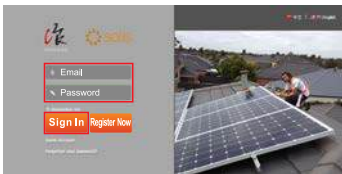
#### Contact

Name

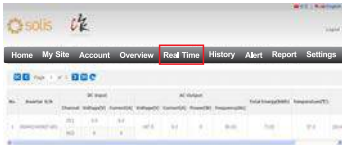
Phone

### 3 Log in Ginlongmonitoring website to manage power station

After successful registration, open the login page of Ginlongmonitoring and input your E-mail and password to access the monitoring system and start monitoring and management of power plants.



**Notice:** If users access the monitoring system for the first time within ten minutes after successful registration, please check the "Real Time" interface. If there are data shown in the Real Time interface, network setting of data logger and other connection are deemed successful.

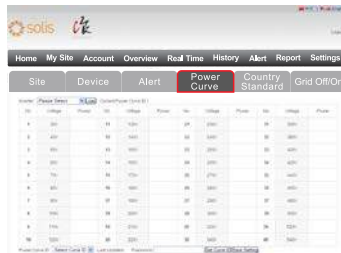


### 4 Remote setting of Ginlongmonitoring

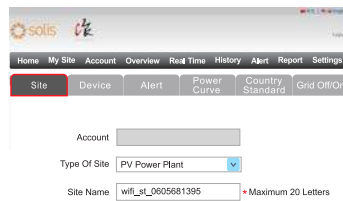
For example, set the station for 'Wind Power Plant' as the following pictures.



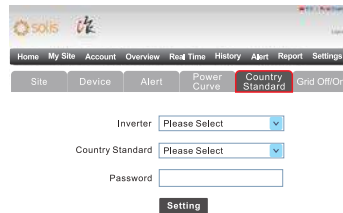
There are four remote setting functions of 'Grid Off/On', 'Country Standard', 'Controller', 'Power Cure' under the 'Setting' choice.



For another example, set the station for 'PV Power Plant' as the following pictures



There are two remote setting functions of 'Grid Off/On', 'Country Standard', under the 'Setting' choice.



#### Ningbo Ginlong Technologies Co., Ltd.

NO. 57 Jintong Road, Binhai Industrial Park  
Xiangshan, Ningbo, Zhejiang, 315712, P.R.China  
Tel: +86(0)574 6578 1806  
Fax: +86(0)574 6578 1606  
Email: info@ginlong.com  
Web: www.ginlong.com

Please record the serial number of your monitor and quote this when you contact us.